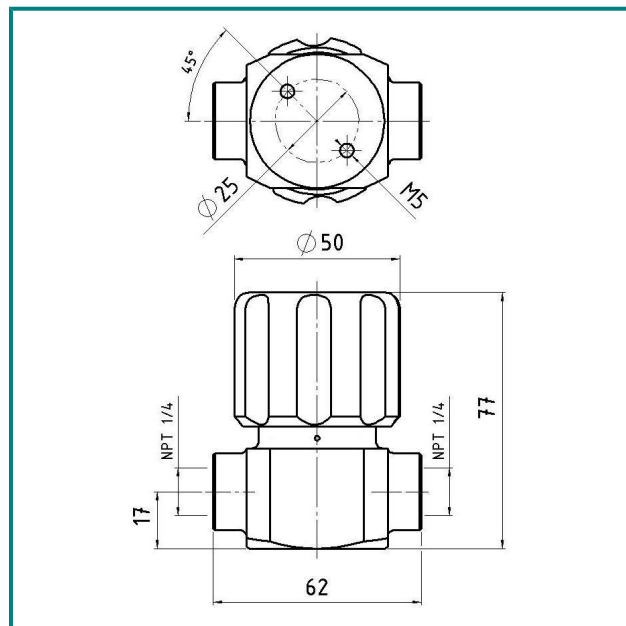


Diaphragm shut-off valve HP 552

- straight through valve with metal diaphragm DN 8 / PN 40



Description:

The diaphragm shut-off valve HP 552 is laid out for the use in pure gas supply systems. The diaphragm shut-off valve has an inlet and an outlet.

Threaded holes on the reverse side connect to a bracket that can be directly mounted on a laboratory wall.

Application area:

Diaphragm shut-off valves are system components used in low pressure pure gas supply.

Accessories:

See total catalogue segment

7. Accessories

Ordering information:

Material:
 1 = stainless steel
 2 = brass

Inlet/outlet:
 1 = 1/4" NPT
 2 = 3/8" NPT

HP552-	2	Gas
Type	Material	Gas type

Technical details:

Body: stainless steel 1.4404 electropolished or brass, nickel and matt chrome plated

Seat: PCTFE

Nominal bore: 8 mm

Diaphragm: 1.4435

Leakage rate: 10⁻⁸ mbar l/s He helium leak test

Gas purity: ≤ 6.0

Cv: 0,5

Max. Pressure: 40 bar

Operating temp.: -20°C to +70°C

Weight: 600g

Connections: G 1/4" f or G3/8" f

Horning Quality standard

The company Horning is certified to **DIN EN ISO 9001 and ISO 14001:2009.**

All single parts are manufactured, assembled and tested by in-house production.

The finished parts are therefore under all criteria of German quality control with 100% final inspection.

Horning GmbH
 Rathenaustraße 55, 63263 Neu-Isenburg

Phone: +49 6102 7883-70
 Fax: +49 6102 7883-40

www.horning.org
 info@horning.org